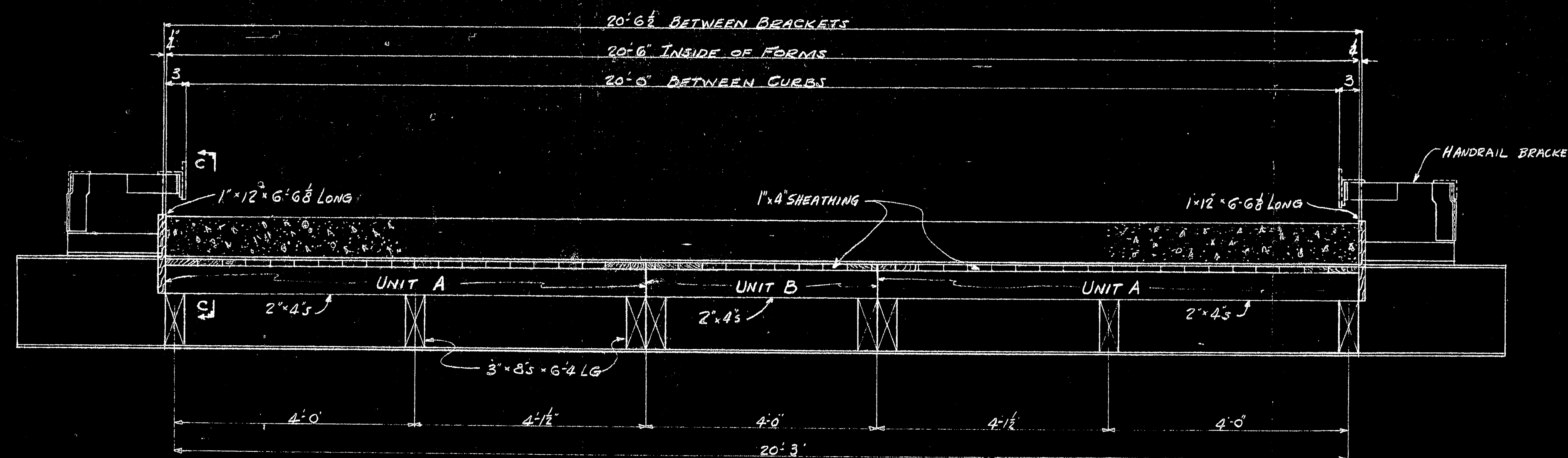
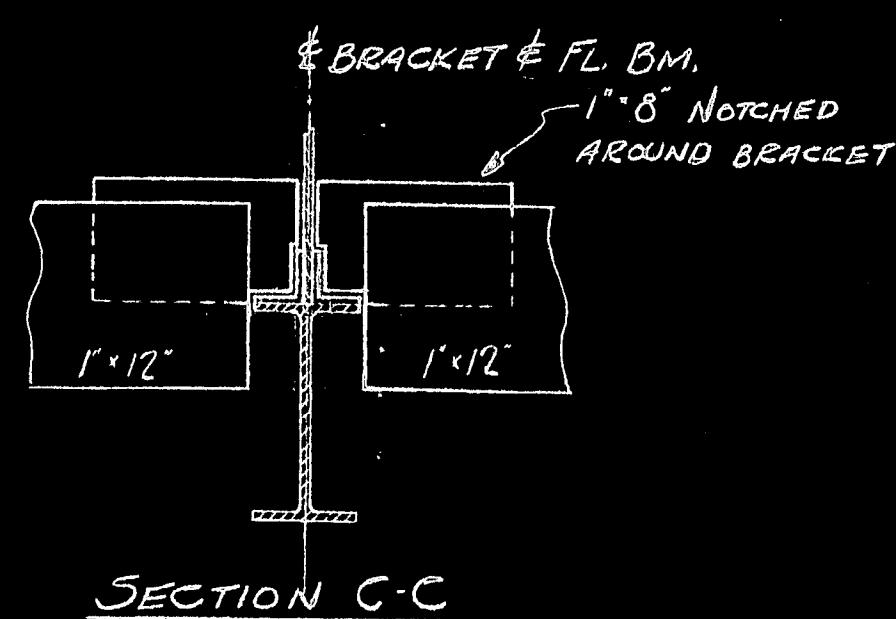


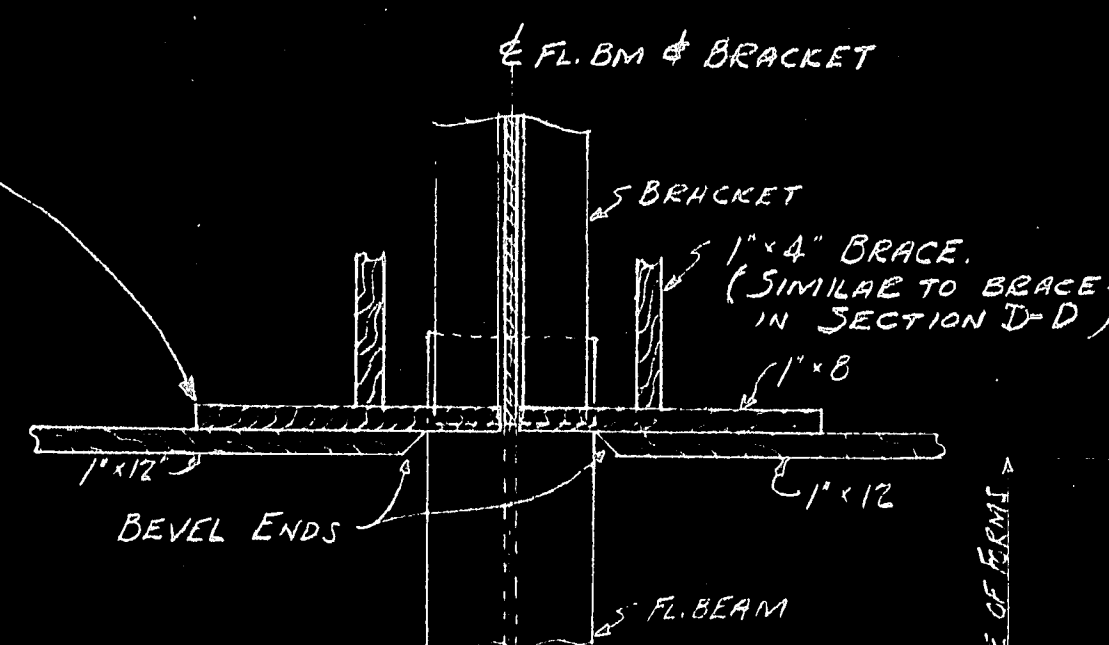
PLAN OF FORMWORK  
FOR TYPICAL APPROACH SPAN.  
(2 SPANS AS SHOWN AT SOUTH END OF BRIDGE)  
(1 SPAN AS SHOWN AT NORTH END OF BRIDGE)



SECTION B-B

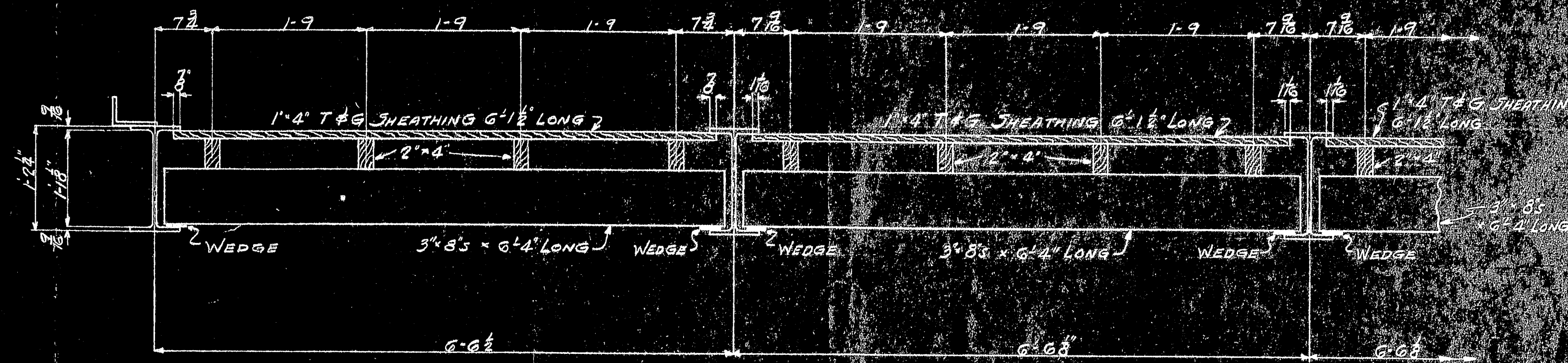


SECTION C-C

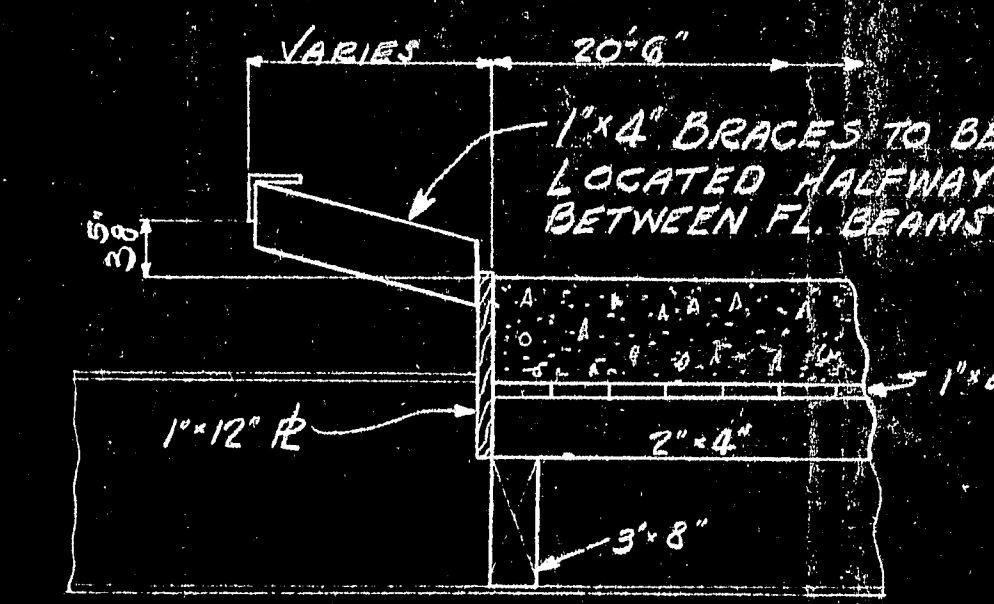


PLAN VIEW  
AT SECTION C-C

NOTE:  
1'-4" SHEATHING AND 2'-4"S TO BE  
NAILED TOGETHER AND ERECTED  
IN SECTIONS.  
(UNIT A 6'-1 1/2" LONG x 8'-3" WIDE)  
(UNIT B 6'-1 1/2" LONG x 4'-0" WIDE)  
SECTIONS ARE NOT TO BE NAILED  
TO 3'-8 1/2".



SECTION A-A



TYPICAL SECTION D-D

MATERIAL LIST (ONE APPROACH SPAN)				
NUMBER PER PANEL	FOR 20 PANELS	MILL SIZE	LENGTH	REMARKS
66	1320	1 x 4	6'-1 1/2	FINISHED T&G
8	160	2 x 4	8'-3	
4	80	2 x 4	4'-0	
2	40	1 x 12	5'-11 1/2	FINISHED
6	120	1 x 4	ABT 170 LIN. FEET	FOR BRACES
8	160	3 x 8	6'-4	
4	80	1 x 8	1'-0	

NOTE  
EACH APPROACH SPAN TO BE  
POURED SEPARATELY.  
FORMS TO BE REUSED

Reviewed 4-27-39  
Guthrie & Stearns  
V.M.C.

CONCRETE FORMWORK FOR  
APPROACH SPANS

CUSTOMER		RELiance STEEL PRODUCTS COMPANY	
PHOENIX BRIDGE CO PHOENIXVILLE, PA.		McKEESPORT PITTSBURGH (PITTSBURGH DISTRICT) PA. BRIDGE DEPARTMENT	
CUSTOMER ORDER NO.		PROJECT PWA PROJECT ME 1010	
REFERENCE		LOCATION DEER ISLE - JEDGWICK BRIDGE - HANCOCK CO. ME	
DRAWN L.M.	DATE 4-20-39	APPROVED BY	DWG. NO. 3031-9
CHECKED A	DATE 4/21		CONTRACT NO. G3325
TRACED			

